

TELEDOM EDUCATION: HOSPITALITY MANAGEMENT PROGRAMME

“Efficient and target oriented learning”

Hospitality is the biggest industry in the world, and in many countries it is the main source of income. If you are going to work in Hospitality Management (HM), you will need to get a qualification in hospitality first. The career choices in the HM field are plentiful. You could work as a hotel manager, either managing an entire hotel or managing a department within a very large hotel. Event planning is another popular career choice, which could involve event and public relations planning for everything from weddings and anniversaries to charity events and corporate functions.

In cooperation with **PEARSON Education**, a global provider in further education, TeleDom opens the **"TELEDOM EDUCATION" centre**. The school will operate under the quality control and certification of Pearson BTEC for Level 4 HNC Diploma in Hospitality Management and Pearson Level 5 HND Diploma in **Hospitality Management** as well as for L5 Diploma in **Innovation for Growth**. The **TeleDom** Conference and Education Centre - created 10 years ago by Novitech Partner Ltd, which provides educational, training and eLearning activities has been **approved as a BTEC Centre**. The TeleDom Education Centre is also accredited by the Ministry of Education of the Slovak Republic for courses in management e.g. Project Management, Process Management, Education for small and medium enterprises, Special managerial courses.



TeleDom Education centre (Slovakia)



PEARSON Worldwide Education Network

PEARSON (www.pearson.com) is the world's leading education provider, which will help you to make a career at the management level in the hospitality industry or to start a business for yourself.

BTEC (www.edexcel.com/BTEC) is the world's most successful and best-loved applied learning brand, and has been engaging learners in practical, interpersonal and thinking skills for over 30 years. Offering academic, vocational qualification to professional certification, educating millions of people worldwide - more than any other private enterprise. Your qualifications will be accepted in the industry and recognised internationally by over 200 universities.

TeleDom and BTEC offer two study targets in hospitality management:

BTEC Higher National Certificate (HNC) in Hospitality Management Level 4

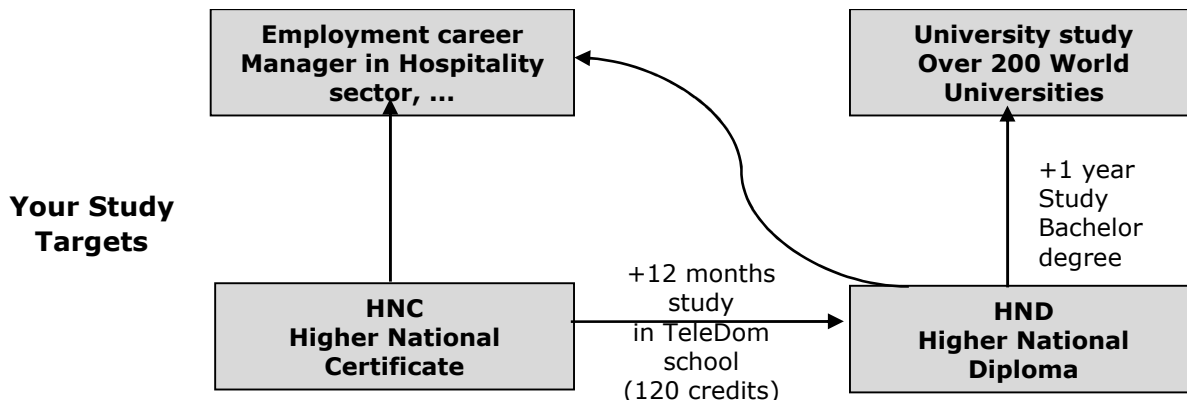
A BTEC Higher National Certificate (HNC) is broadly equivalent to the first year of an undergraduate degree. The BTEC Higher National Certificate (HNC) Level 4 offers flexibility that is appealing to a broad range of students because it can be acquired to fit alongside employment, or full time and through distance learning.

Edexcel specification: <http://www.edexcel.com/quals/highnationals10/hospitality/Pages/default.aspx>
First-time visitor portal: www.teledomschool.eu

BTEC Higher National Diploma (HND) in Hospitality Management Level 5

A BTEC Higher National Diploma (HND) is broadly equivalent to the first two years of an undergraduate degree. After completing this course you will be able to pursue both supervisory and junior management positions in the dynamic hospitality industry or progress to over 100 universities to have a degree in hospitality.

Typical job careers: Hotel Manager, Conference and Banqueting Manager, Food and Beverage Manager, Front House Manager, Resort Office Manager, Licensed Retail Manager



The TeleDom Education centre will award the best students with: discounted tuition fee or even paid for additional RWE (real work environment) activities. The most **outstanding students** will **study free**

Real Work Environment Study	<p>RWE Assignments: delivering tasks in real work environment (RWE) in TeleDom hotel and/or restaurant.</p>	<p>Task Assessment: task delivery quality and relevance to RWE e.g. design of hotel newsletter, marketing campaign, Restaurant menu, information system, etc.</p>	<p>Support: TeleDom managerial staff guiding you in completion of your assignment task.</p> <p>Your physical presence in the RWE is required.</p>
On-line Study	<p>On-line Assignments: learning Unit tasks which can be delivered remotely (via Internet).</p>	<p>Task Assessments: The unit teacher (assessor) will evaluate your results (assignment deliverable) submitted to the learning portal.</p>	<p>Support: resources, assignment specifications, assignment management portal.</p> <p>Guidance by the Teacher of the learning unit.</p>
Your Self-study	<p>Self-study: You study the selected learning unit(s) at your pace. You study resources relevant to the learning unit you have started (opened). You can have up to 3 learning units opened.</p> <p style="text-align: center;"></p>	<p>Web meetings: Twice a week you can join a web meeting moderated by the instructor of the learning unit.</p> <p>You collect and apply knowledge to deliver your assignments ensuring that they are of high quality (Pass, Merit, Distinction)</p>	<p>Support: resources, assignment specifications for each learning unit, eLearning portal</p> <p>You can update your study plan any time</p> <p style="text-align: center;"></p>
Start your study	<p>Registration: continuous admission. You can register for your study (the first learning unit) at any time by submitting the Application form. You pay a monthly tuition fee. You can suspend your study. First month tuition is free.</p>	<p>Study Plan: Based on your study target (HNC or HND) the Course manager will develop a study plan (sequence of learning units). You can select optional learning units and intensive (18 months) or a standard plan (up to 24 months)</p>	<p style="text-align: center;"><i>Your study plan (learning units)</i></p>

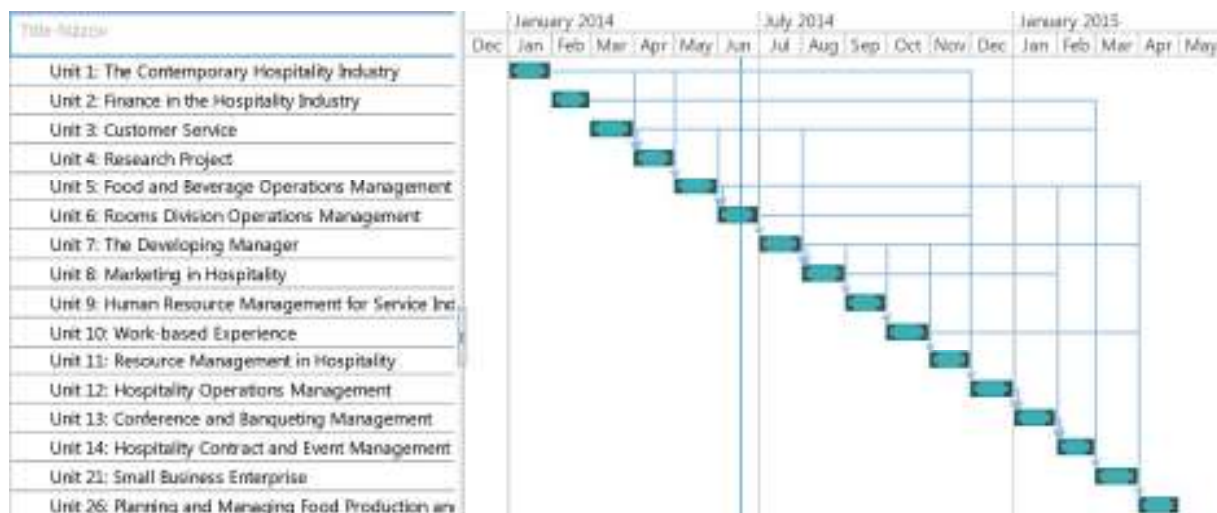
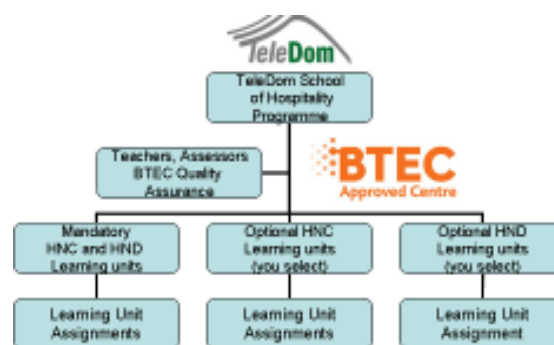


Figure 1. Study plan example of HND study (240 Credits)

PROGRAMME STRUCTURE

The programme is composed of 16 units. The HNC (8 units) is usually done in a year face to face or 2 years in the case of distance learning. With us this can be done in a shorter time! The same goes for HND, which in a standard way takes two years. When students have completed HNC they can top up to HND (adding 8 units to what was achieved during HNC).

The typical duration of an entire HNC at TeleDom is 8-12 months and of HND is 18-24 months.



The HND opens doors to the third year of a university degree programme. More information on the Pearson Degree Course Finder: <https://degreecoursefinder.pearson.com/>

Learning Environment: The programme will utilize various teaching and learning strategies, including:

- Lectures and presentations to deliver taught content and materials
- Seminars and workshops to encourage classroom participation and self-study
- Students are required to undertake set reading on certain topics and explore relevant literature for assignments and class discussions



Albert Einstein Hall

Assessment: The assessment strategy takes into account the different roles of each individual unit of the programme. The assessment strategy employs a range of assessment methods such as individual programme work (essays, reports, literature review), group projects (reports, presentations, case studies). The range of assessment is designed to reflect the learning outcome of each unit.

This programme offers the following opportunities:

- Undertake the study of organisations, their management and the changing environment in which they operate
- Provide students with a programme offering a balance of theory and practical skills which will facilitate their intellectual and professional development
- Equip students with the necessary knowledge and skills (including thinking skills and general skills) to achieve the appropriate level of education award and to continue their lifelong development.



Hotel

Tuition fee and study incentives

1. Base tuition fee 400 € for each month starting from registration until completing the unit (HNC or HND). First month tuition is free.
The base fee includes:
 - a. Access to learning resources and course portal
 - b. Participation in web meetings with the teachers (min. twice a week for 2 hours)
 - c. Accommodation at the TeleDom hotel for the Units where practical assignments require real working environment
 - d. TeleDom certificate of completion after each unit passed and Pearson international BTEC HNC or HND certificate/diploma after completion of the entire programme.
2. Discounts from the tuition fee:
 - a. Working as a trainee and participating in the TeleDom Hotel's daily operations
 - b. Hourly rate 4-15€ depending on the nature of the work performed by the student.



Reception



Restaurant

Examples of Real Work Environment: Providing assistance to Reception desk, designing update for the Hotel internet portal, providing assistance at banqueting events, etc. The main motivation goal for both students and the TeleDom training centre are:

- Intensive study – means lower total cost of course for the student
- Intensive participation in real operations of the Hotel – reduction of the monthly tuition fee
- Best students will be offered employment status at TeleDom Centre

Contacts for the programme:



Dr. Attila Tóth
Director,
TeleDom Business school



Christian de Fouloy, MBA
Programme Leader



Dr. Marianna Prokaiová
Programme Quality
Manager

Email: info@teledomschool.sk, web: www.school.teledom.sk

Postal address: TeleDom Education Centre, Timonova Street 27, 040 01 Kosice, Slovak Republic
Phones, Košice: Phone: +421 553274400, Brussels: +32 497482111, Luxembourg: +352 691554719